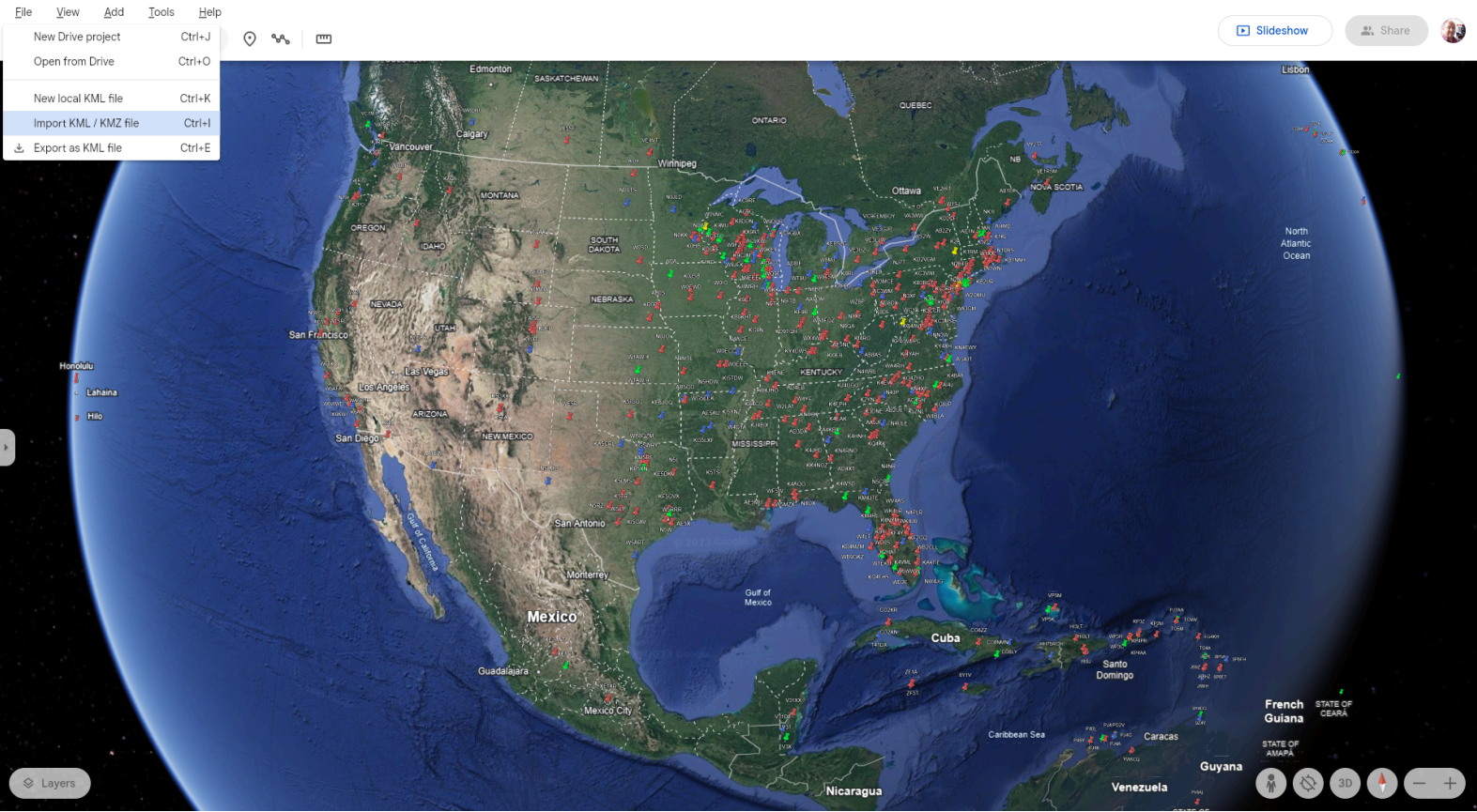




I've been asked how can I view my contacts on a globe that I can spin around. The answer is to use the KML download feature of QSOMAP under the File Option. Download a KML file and then import the KML file into Google earth



↩ Reply

👍 Like

☰ More

N9MS Mike Saeger ▼

Jan 8 #259



↩ Reply



≡ More

Luis Morales ▼

12/11/23 #224



Very nice, thanks for sharing

Luis O. Morales, MPS-EM, BSN

Show quoted text

↩ Reply



≡ More

Viewing your contacts on a globe

Rus Healy, K2UA ▾

4:27pm #277

This is awesome, Mike!

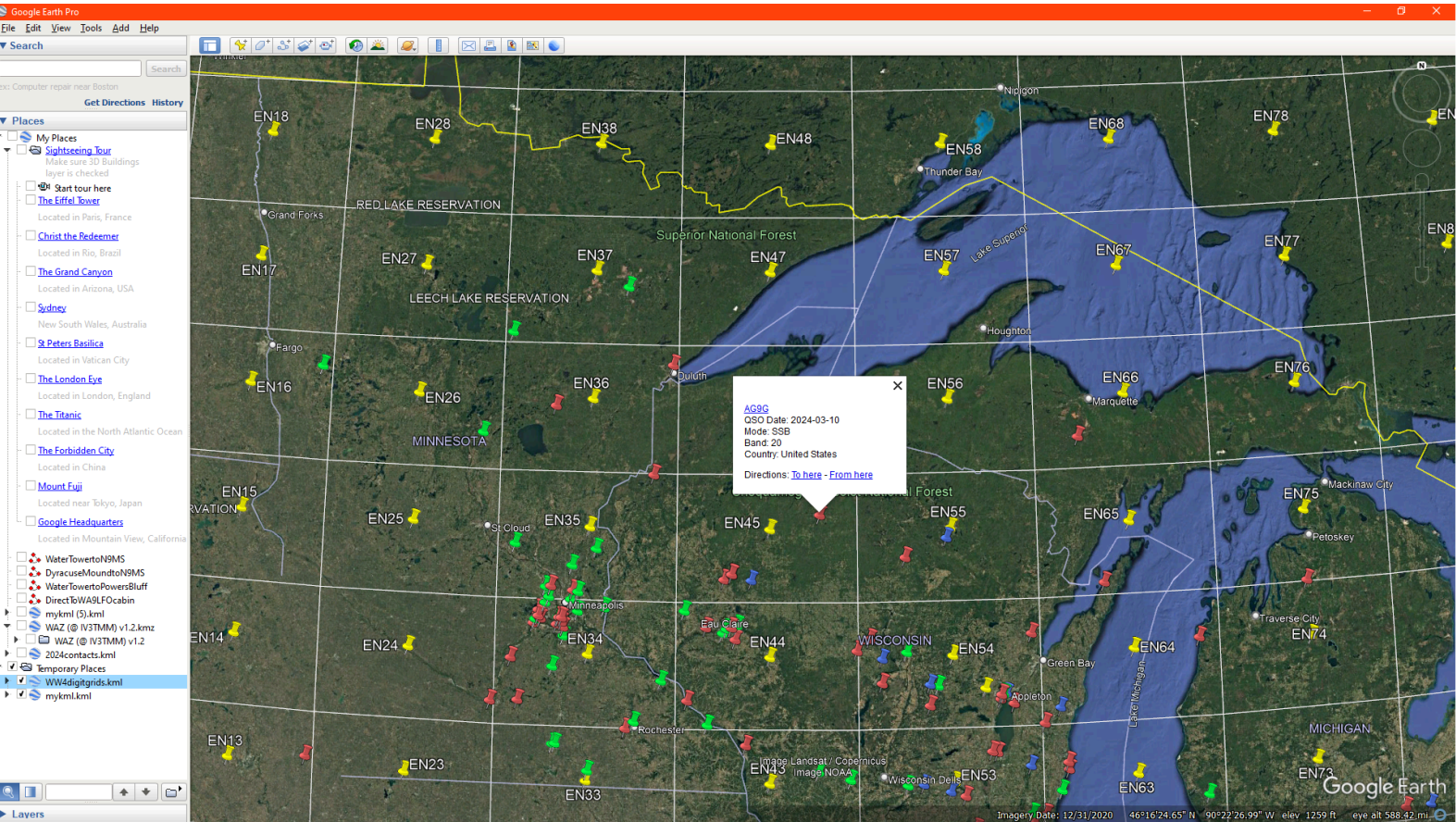
--73, Rus, K2UA

Reply
 Like
 More

N9MS Mike Saeger ▾

Jan 9 #261

If you download the maidenhead grid .KMZ file from <https://thesaegers.com/kml/WW4digitgrids.kmz> and import it into Google Earth, you can overlay the 4-digit grid system over your contacts downloaded from the QSOMAP KML Download program: <https://www.qsomap.com/qsomapkml.php>



Reply
 Like
 More